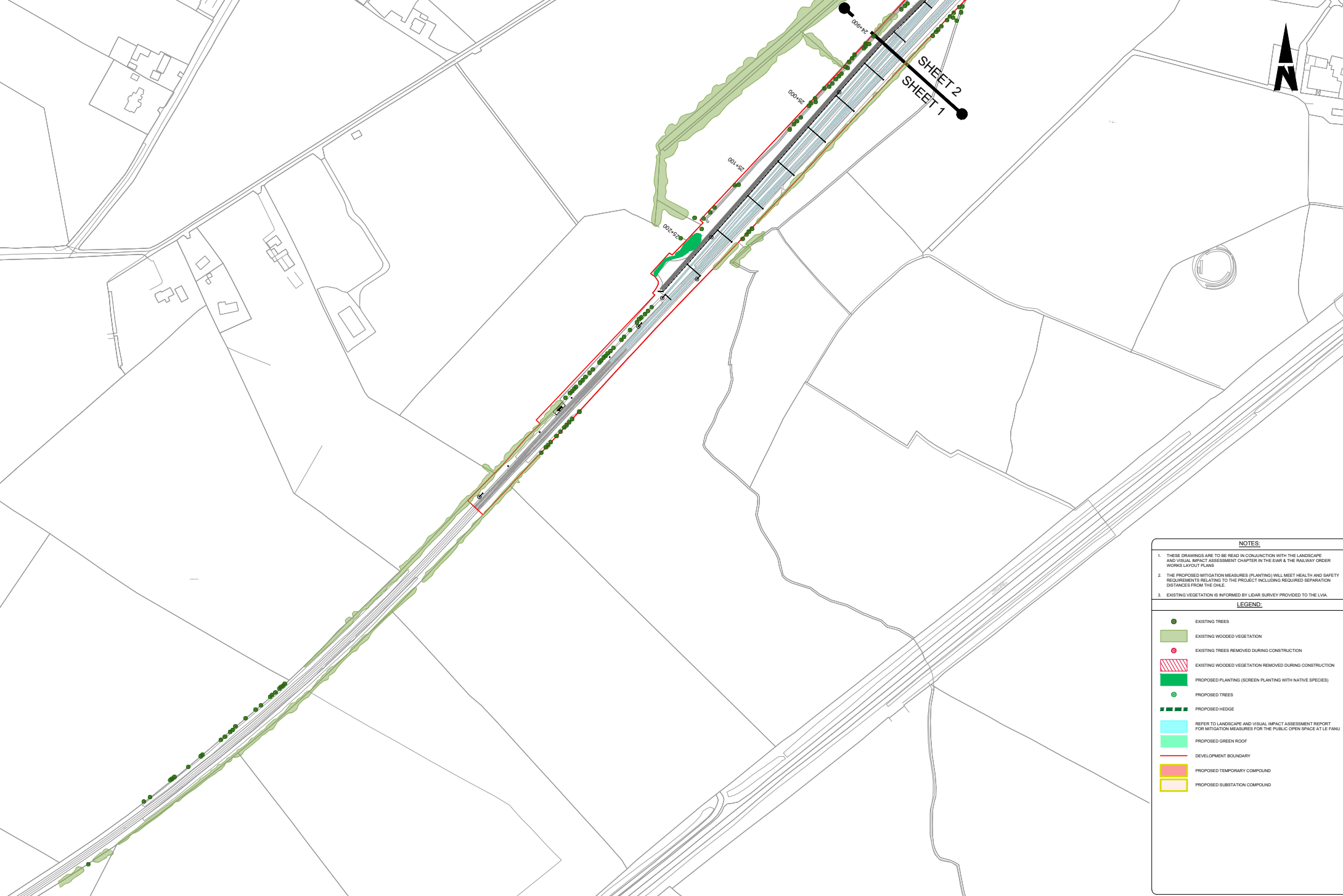

Appendix 15.1

Landscape Mitigation



SHEET 2
SHEET 1



NOTES:

- THESE DRAWINGS ARE TO BE READ IN CONJUNCTION WITH THE LANDSCAPE AND VISUAL IMPACT ASSESSMENT CHAPTER IN THE EIA & THE RAILWAY ORDER WORKS LAYOUT PLANS
- THE PROPOSED MITIGATION MEASURES (PLANTING) WILL MEET HEALTH AND SAFETY REQUIREMENTS RELATING TO THE PROJECT INCLUDING REQUIRED SEPARATION DISTANCES FROM THE GLE.
- EXISTING VEGETATION IS INFORMED BY LIDAR SURVEY PROVIDED TO THE LVA.

LEGEND:

- EXISTING TREES
- EXISTING WOODED VEGETATION
- EXISTING TREES REMOVED DURING CONSTRUCTION
- ▨ EXISTING WOODED VEGETATION REMOVED DURING CONSTRUCTION
- PROPOSED PLANTING (SCREEN PLANTING WITH NATIVE SPECIES)
- PROPOSED TREES
- PROPOSED HEDGE
- REFER TO LANDSCAPE AND VISUAL IMPACT ASSESSMENT REPORT FOR MITIGATION MEASURES FOR THE PUBLIC OPEN SPACE AT LE FANU
- PROPOSED GREEN ROOF
- DEVELOPMENT BOUNDARY
- PROPOSED TEMPORARY COMPOUND
- PROPOSED SUBSTATION COMPOUND

R:\MID\1596 - DART Expansion\Kilias\Line6\Project\Discovers\2_Landscape\MITIGATION\DRAWINGS\DP-04-23-DWG-ORD-TTA-23838-23854_V01-S-23858 to 23864-Landscape_Mitigation.dwg

© Irish Rail (2023). This drawing is confidential and the copyright in it is owned by Irish Rail. This drawing must not be altered, copied or otherwise reproduced in whole or in part or used for any purpose without the prior permission of Irish Rail.
 © Ordnance Survey Ireland and government of Ireland. All O.S. Data used for plans are printed under "Copyright Ordnance Survey Ireland". Survey No. 020072, OSi Aerial Data or OSi Lidar Data & Survey No. 2022070, ARIA, 100 (OSi Vector Data).
 All elevations are in metres and relate to OSi Geoid Model (OSiMGM) Mean Sea Level as defined by existing Project Control. All Co-ordinates are in Irish Transverse Mercator Grid (ITM) as defined by OSi active GPS station T48474 (TU15).



Rev	Date	Dim	Chk'd	App'd	Description
01	11.11.22	DB	EJC/AGCR		PLANNING ISSUE
02	11.11.22	DB	EJC/AGCR		Issue for Review & Comment (PLANNING)

Client: **Irish Rail** / **Irish Rail**

Date: 11.11.22 | Scale: 1:1250 (B, A) | Drawn: NTA/BA | Checked: DB | Approved: EJC/AGCR

Project Code: 575956 | Issued: RPS | DBS Code: AGCR

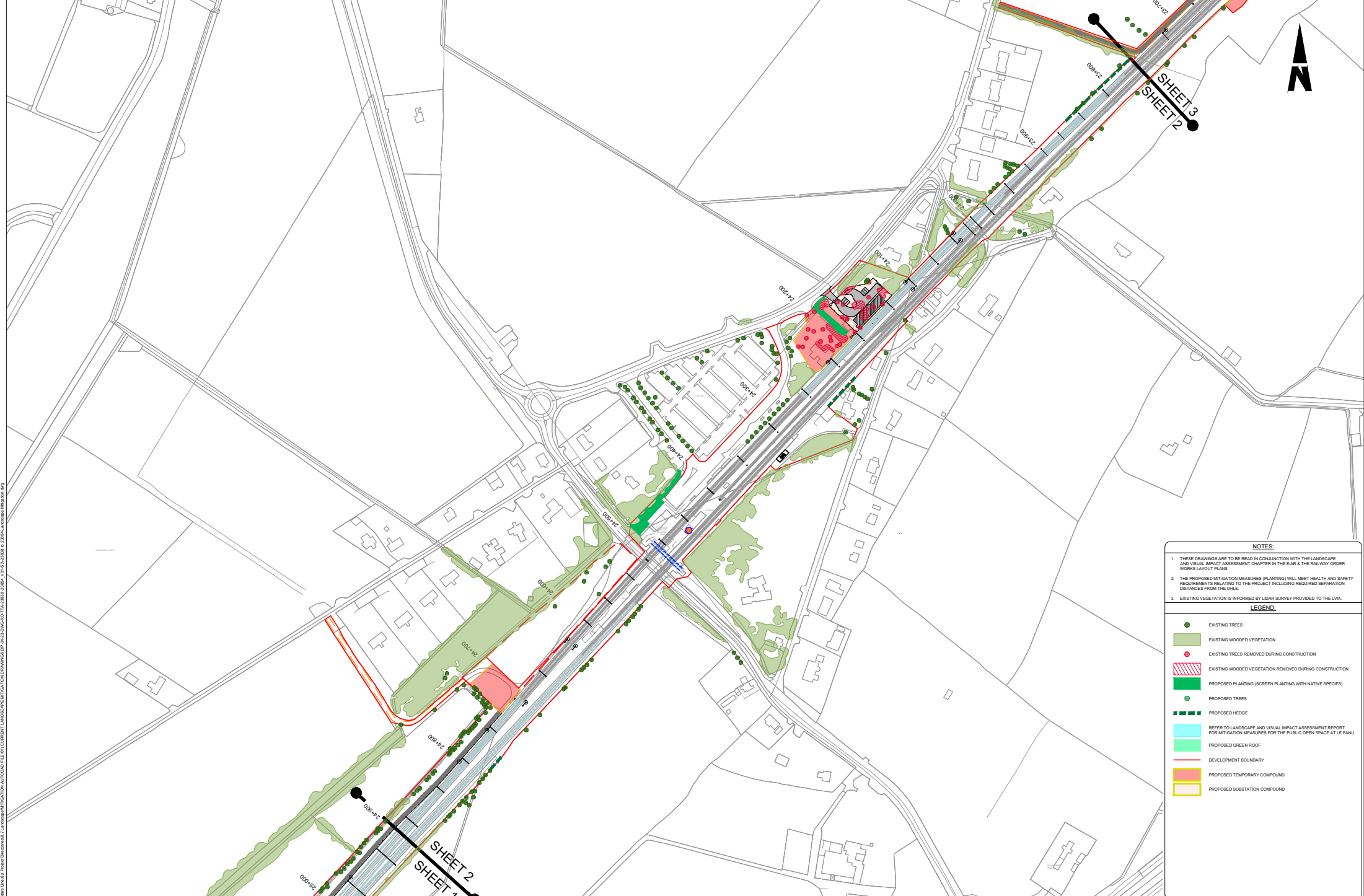
Project Title: **DART+ SOUTH WEST**

Drawing Title: **LANDSCAPE MITIGATION**

SHEET 1 OF 17

Drawing File Name: DP-04-23-DWG-EV-TTA-23838 | Version: V01 | Status: S3

DO NOT SCALE. USE FIGURED DIMENSIONS ONLY.



NOTES:

- THESE DRAWINGS ARE TO BE READ IN CONJUNCTION WITH THE LANDSCAPE AND VISUAL IMPACT ASSESSMENT CHAPTER IN THE EIA & THE RAILWAY ORDER WORKS LAYOUT PLANS
- THE PROPOSED MITIGATION MEASURES (PLANTING) WILL MEET HEALTH AND SAFETY REQUIREMENTS RELATING TO THE PROJECT INCLUDING REQUIRED SEPARATION DISTANCES FROM THE GLE.
- EXISTING VEGETATION IS INFORMED BY LIDAR SURVEY PROVIDED TO THE LVA.

LEGEND:

- EXISTING TREES
- EXISTING WOODED VEGETATION
- EXISTING TREES REMOVED DURING CONSTRUCTION
- EXISTING WOODED VEGETATION REMOVED DURING CONSTRUCTION
- PROPOSED PLANTING (SCREEN PLANTING WITH NATIVE SPECIES)
- PROPOSED TREES
- PROPOSED HEDGE
- REFER TO LANDSCAPE AND VISUAL IMPACT ASSESSMENT REPORT FOR MITIGATION MEASURES FOR THE PUBLIC OPEN SPACE AT LE FANU
- PROPOSED GREEN ROOF
- DEVELOPMENT BOUNDARY
- PROPOSED TEMPORARY COMPOUND
- PROPOSED SUBSTATION COMPOUND

© Irish Rail (2023). This drawing is confidential and the copyright in it is owned by Irish Rail. This drawing must not be altered, copied or otherwise reproduced in whole or in part or used for any purpose without the prior permission of Irish Rail. © Ordnance Survey Ireland and government of Ireland. All O.S. Data used for plans are printed under "Copyright Ordnance Survey Ireland". Survey file: 0200722_C02_Aerial Data or C02_Like Data & Survey file: 2022C02_A04_101_C02_Vegetation Data. All elevations are in metres and relate to OSG Co-Ord Model (OSG2000 Mean Height) as defined by existing Project Control. All Co-ordinates are in Irish Transverse Mercator Grid (ITM) as defined by O.S. active EPSG notation: 29501 (Easting: 71142).



Rev	Date	Chg	Chk'd	App'd	Description
01	11.11.22	DB	ECG	AGCR	PLANNING ISSUE
02	11.11.22	DB	ECG	AGCR	Issue for Review & Comment (PLANNING)

Client	Irish Rail Iarnród Éireann	Engineering Designer	ATKINS Irish Rail	Project Title	DART+ SOUTH WEST	
Date	11.11.22	Scale	1:1250 @ A4	Drawn	WTS/BA	
Project Code	519986	Issued	SPC	Checked	ECG	
		Drawn Code	DB	Approved	AGCR	
Drawing File Name	DP-04-23-DWG-EV-TTA-23839					
Version	V0				Status	53

DATE: 11.11.22
SCALE: 1:1250 @ A4
PROJECT CODE: 519986
ISSUED: SPC
DRAWN: DB
CHECKED: ECG
APPROVED: AGCR

Drawing Title: **LANDSCAPE MITIGATION**
SHEET 2 OF 17

Project File: **DART+ SOUTH WEST**

DO NOT SCALE. USE FIGURED DIMENSIONS ONLY.



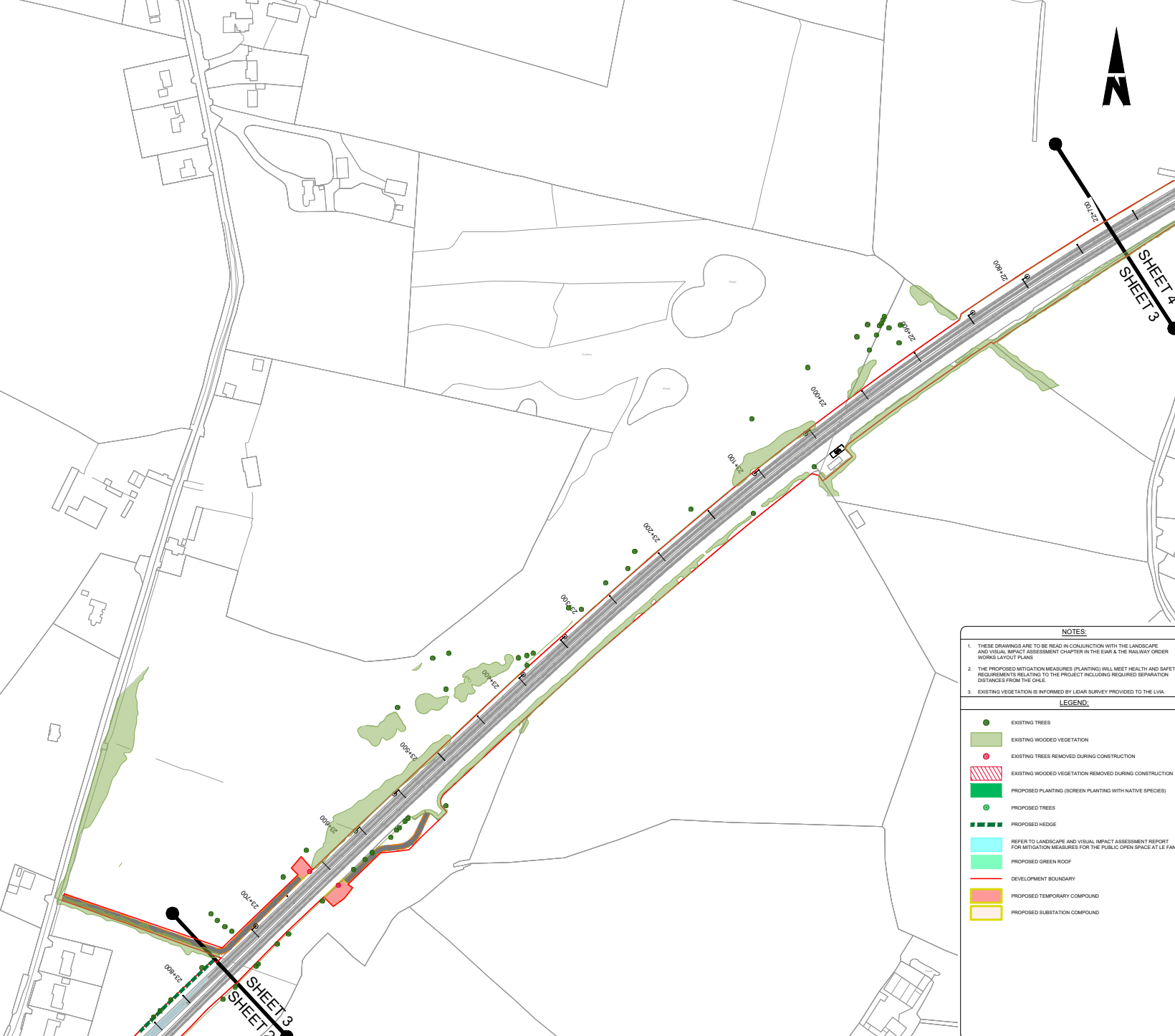
SHEET 4
SHEET 3

NOTES:

- THESE DRAWINGS ARE TO BE READ IN CONJUNCTION WITH THE LANDSCAPE AND VISUAL IMPACT ASSESSMENT CHAPTER IN THE EIA & THE RAILWAY ORDER WORKS LAYOUT PLANS
- THE PROPOSED MITIGATION MEASURES (PLANTING) WILL MEET HEALTH AND SAFETY REQUIREMENTS RELATING TO THE PROJECT INCLUDING REQUIRED SEPARATION DISTANCES FROM THE GLE.
- EXISTING VEGETATION IS INFORMED BY LIDAR SURVEY PROVIDED TO THE LVA.

LEGEND:

- EXISTING TREES
- EXISTING WOODED VEGETATION
- EXISTING TREES REMOVED DURING CONSTRUCTION
- EXISTING WOODED VEGETATION REMOVED DURING CONSTRUCTION
- PROPOSED PLANTING (SCREEN PLANTING WITH NATIVE SPECIES)
- PROPOSED TREES
- PROPOSED HEDGE
- REFER TO LANDSCAPE AND VISUAL IMPACT ASSESSMENT REPORT FOR MITIGATION MEASURES FOR THE PUBLIC OPEN SPACE AT LE FANU
- PROPOSED GREEN ROOF
- DEVELOPMENT BOUNDARY
- PROPOSED TEMPORARY COMPOUND
- PROPOSED SUBSTATION COMPOUND



© Irish Rail (2023). This information is confidential and the copyright in it is owned by Irish Rail. This drawing must not be altered, copied or otherwise reproduced in whole or in part or used for any purpose without the prior permission of Irish Rail.
 © Ordnance Survey Ireland and government of Ireland. All O.S. Data used for plans are printed under "Copyright Ordnance Survey Ireland". Survey No. 0200722. OSi Aerial Data or OSi Lidar Data © Survey No. 20220201. ARIA. 100 (OSi Vector Data).
 All elevations are in metres and relate to OSi Geoid Model (OSi2004 Mean Sea Level as defined by existing Project Control). All Co-ordinates are in Irish Transverse Mercator Grid (ITM) as defined by OSi active GPS station Tallaght College (TL16).



Rev	Date	Dim	Chk'd	App'd	Description
13	11.22	DB	ECG	AGCR	PLANNING ISSUE
12	11.22	DB	ECG	AGCR	Issue for Review & Comment (PLANNING)

Client: **Irish Rail** / **Irish Rail**

Date: 11.11.22 Scale: 1:1250 (B, A0)
 Project Code: S19966 Issue: RPS
 Drawn: DB Checked: ECG Approved: AGCR

Project Title: **DART+ SOUTH WEST**

Drawing Title: **LANDSCAPE MITIGATION**

Sheet: **SHEET 3 OF 17**

Drawing File Name: **DP-04-23-DWG-RO-TTA-23840** Version: **01** Status: **33**

R:\MIDT199 - DART Expansion\Kilias_Lin\614_Progect\Discovers\2_Landscape\MITIGATION\DRAWINGS\DP-04-23-DWG-RO-TTA-23840-TTA-23840_V01.S-23840-23840-23840-Landscape_Mitigation.dwg

DO NOT SCALE. USE FIGURED DIMENSIONS ONLY.



NOTES:

- THESE DRAWINGS ARE TO BE READ IN CONJUNCTION WITH THE LANDSCAPE AND VISUAL IMPACT ASSESSMENT CHAPTER IN THE EIA & THE RAILWAY ORDER WORKS LAYOUT PLANS
- THE PROPOSED MITIGATION MEASURES (PLANTING) WILL MEET HEALTH AND SAFETY REQUIREMENTS RELATING TO THE PROJECT INCLUDING REQUIRED SEPARATION DISTANCES FROM THE GLE.
- EXISTING VEGETATION IS INFORMED BY LIDAR SURVEY PROVIDED TO THE LVA.

LEGEND:

- EXISTING TREES
- EXISTING WOODED VEGETATION
- EXISTING TREES REMOVED DURING CONSTRUCTION
- EXISTING WOODED VEGETATION REMOVED DURING CONSTRUCTION
- PROPOSED PLANTING (SCREEN PLANTING WITH NATIVE SPECIES)
- PROPOSED TREES
- PROPOSED HEDGE
- REFER TO LANDSCAPE AND VISUAL IMPACT ASSESSMENT REPORT FOR MITIGATION MEASURES FOR THE PUBLIC OPEN SPACE AT LE FANU
- PROPOSED GREEN ROOF
- DEVELOPMENT BOUNDARY
- PROPOSED TEMPORARY COMPOUND
- PROPOSED SUBSTATION COMPOUND

© Irish Rail (2023). This drawing is confidential and the copyright in it is owned by Irish Rail. This drawing must not be either issued, copied or otherwise reproduced in whole or in part or used for any purpose without the prior permission of Irish Rail.

NTA
2040
11.11.22

Rev	Date	Dim	CHK'd	App'd	Description
13	10.01.23	DB	EOIC	AGCR	PLANNING ISSUE
12	11.11.22	DB	EOIC	AGCR	Issue for Review & Comment (PLANNING)

Client: **Irish Rail**

Engineering Designer: **ATKINS**

Supported by: **rps**

Date: 11.11.22
Scale: 1:1250 (B, A0)
Project Code: S19966
Issue: RPS
DMS Code: EOIC
Approved: AGCR

Project Title: **DART+ SOUTH WEST**

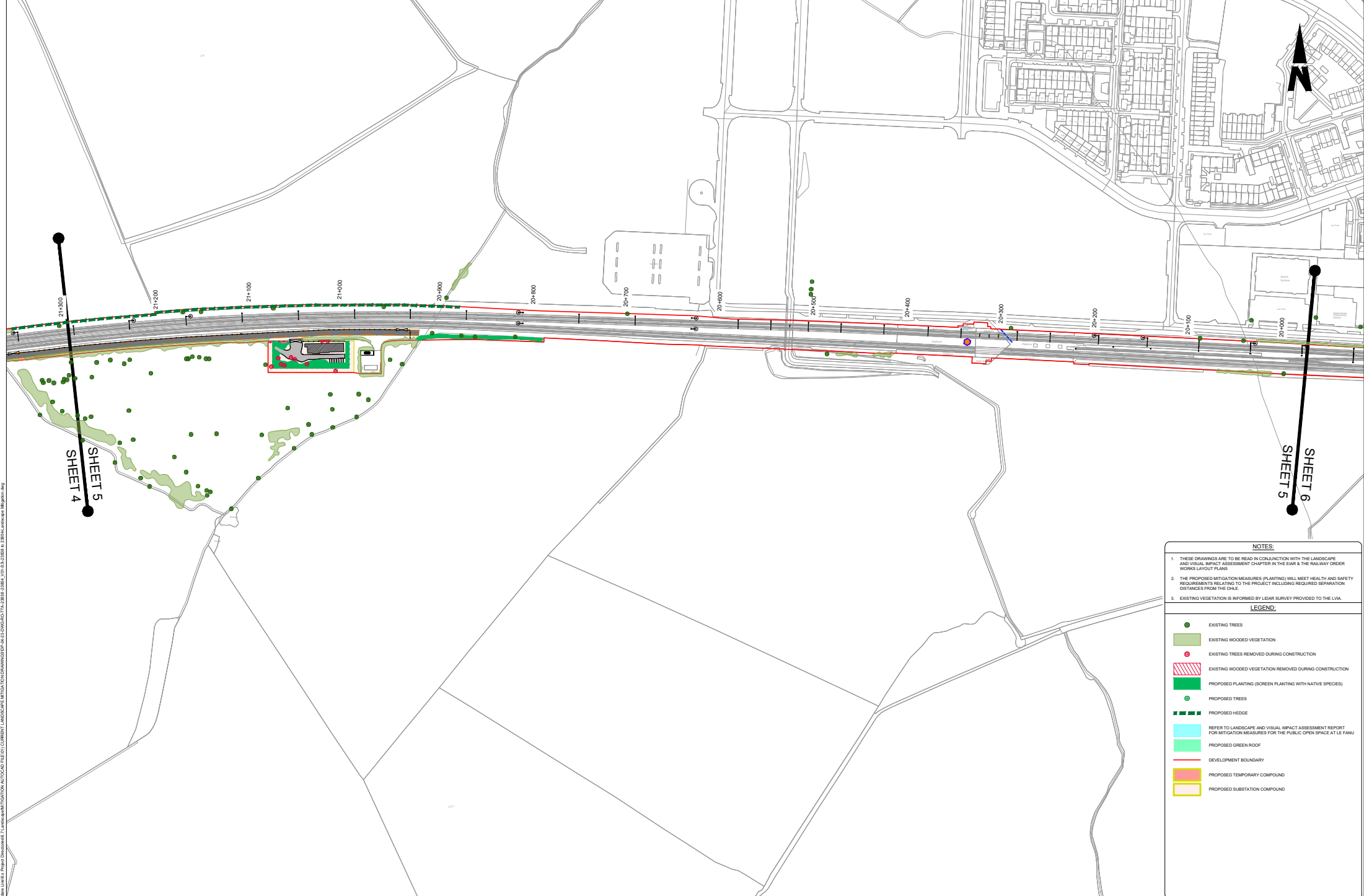
Drawing Title: **LANDSCAPE MITIGATION**

Drawing File Name: **DP-04-23-DWG-RO-TTA-23841**

Version: **V0** | Status: **S3**

Project Location: **SHEET 4 OF 17**

DO NOT SCALE. USE FIGURED DIMENSIONS ONLY.



NOTES:

1. THESE DRAWINGS ARE TO BE READ IN CONJUNCTION WITH THE LANDSCAPE AND VISUAL IMPACT ASSESSMENT CHAPTER IN THE EIA & THE RAILWAY ORDER WORKS LAYOUT PLANS
2. THE PROPOSED MITIGATION MEASURES (PLANTING) WILL MEET HEALTH AND SAFETY REQUIREMENTS RELATING TO THE PROJECT INCLUDING REQUIRED SEPARATION DISTANCES FROM THE GLE.
3. EXISTING VEGETATION IS INFORMED BY LIDAR SURVEY PROVIDED TO THE LVA.

LEGEND:

- EXISTING TREES
- EXISTING WOODED VEGETATION
- EXISTING TREES REMOVED DURING CONSTRUCTION
- EXISTING WOODED VEGETATION REMOVED DURING CONSTRUCTION
- PROPOSED PLANTING (SCREEN PLANTING WITH NATIVE SPECIES)
- PROPOSED TREES
- PROPOSED HEDGE
- REFER TO LANDSCAPE AND VISUAL IMPACT ASSESSMENT REPORT FOR MITIGATION MEASURES FOR THE PUBLIC OPEN SPACE AT LE FANU
- PROPOSED GREEN ROOF
- DEVELOPMENT BOUNDARY
- PROPOSED TEMPORARY COMPOUND
- PROPOSED SUBSTATION COMPOUND

© Irish Rail (2023). This drawing is confidential and the copyright in it is owned by Irish Rail. This drawing must not be altered, copied or otherwise reproduced in whole or in part or used for any purpose without the prior permission of Irish Rail.
 © Ordnance Survey, Ireland and government of Ireland. All O.S. Data used for plans are printed under "Copyright Ordnance Survey Ireland". Survey No. 020072. OS Address Data or OS Site Data & Survey No. 2022020. All Rights Reserved.
 All elevations are in metres and relate to OS Grid Model (OSBM) Mean Sea Level as defined by existing Project Control. All Co-ordinates are in Irish Transverse Mercator Grid (ITM) as defined by OS active GPS station T4light Colliery (T4LC).



Rev	Date	Dim	CHK'd	App'd	Description
13	11.22	DB	ECG	AGCR	PLANNING ISSUE
12	11.22	DB	ECG	AGCR	Issue for Review & Comment (PLANNING)

Client: **Irish Rail** / **Irish Rail**

Date: 11.11.22 | Scale: 1:1250 (B, AD) | Drawn: NTS/BA | Checked: ECG | Approved: AGCR

Project Code: 579996 | Issue: RPS | DBS Code: AGCR

Project Title: **DART+ SOUTH WEST**

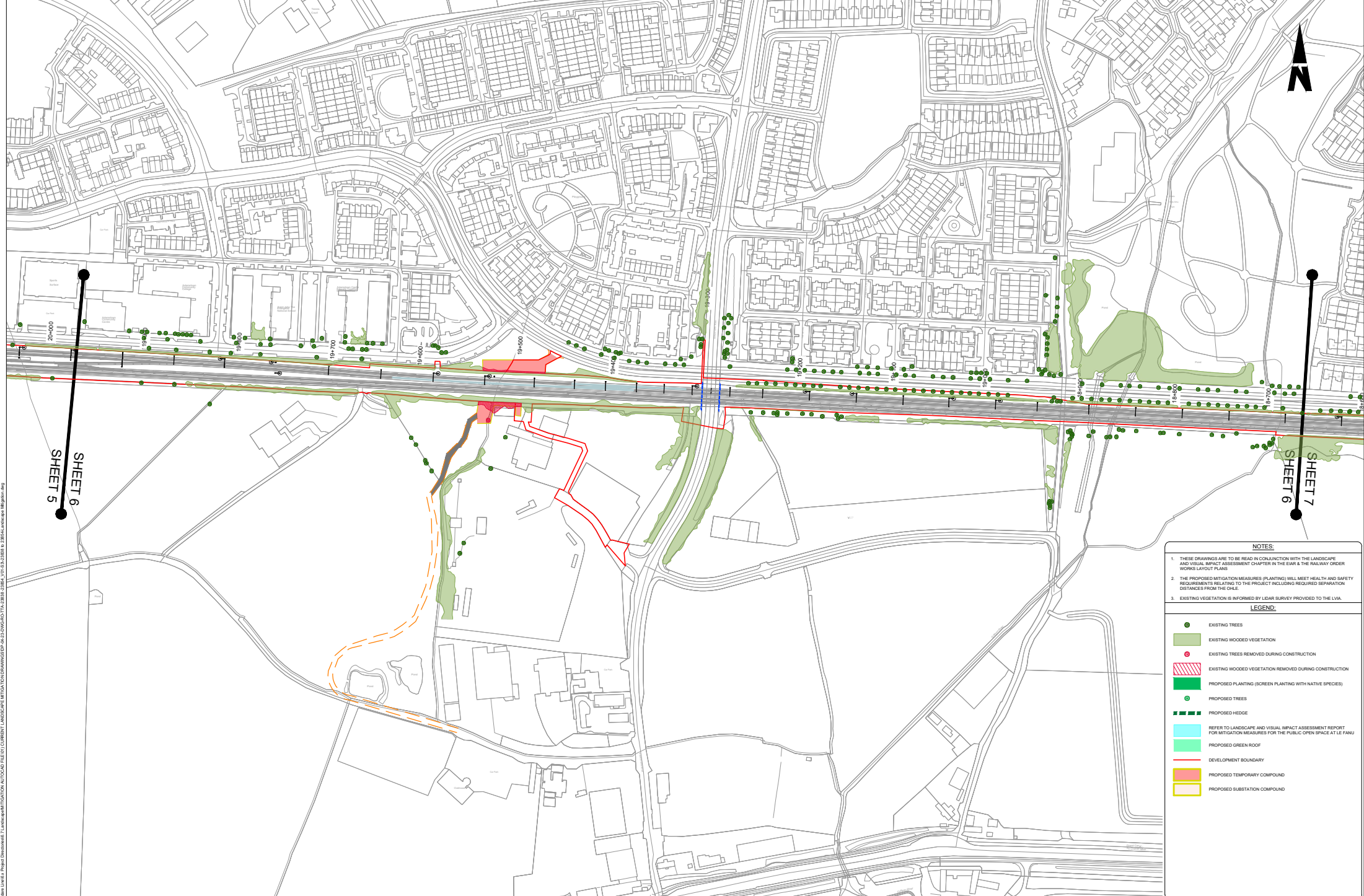
Drawing Title: **LANDSCAPE MITIGATION**

Version: 01 | Sheet: 5 OF 17

Drawing File Name: DP-04-23-DWG-RO-TTA-23842 | Version: 01 | Status: 53

R:\MIDT1596 - DART Expansion\Kilias\Line6 - Project\Drawings\2.Landscape\Mitigation\Drawings\DP-04-23-DWG-RO-TTA-2384-2384_V01-01-2384-2384_Landscape_Mitigation.dwg

DO NOT SCALE USE FIGURED DIMENSIONS ONLY



NOTES:

- THESE DRAWINGS ARE TO BE READ IN CONJUNCTION WITH THE LANDSCAPE AND VISUAL IMPACT ASSESSMENT CHAPTER IN THE EIA & THE RAILWAY ORDER WORKS LAYOUT PLANS
- THE PROPOSED MITIGATION MEASURES (PLANTING) WILL MEET HEALTH AND SAFETY REQUIREMENTS RELATING TO THE PROJECT INCLUDING REQUIRED SEPARATION DISTANCES FROM THE GLE.
- EXISTING VEGETATION IS INFORMED BY LIDAR SURVEY PROVIDED TO THE LVA.

LEGEND:

- EXISTING TREES
- EXISTING WOODED VEGETATION
- EXISTING TREES REMOVED DURING CONSTRUCTION
- EXISTING WOODED VEGETATION REMOVED DURING CONSTRUCTION
- PROPOSED PLANTING (SCREEN PLANTING WITH NATIVE SPECIES)
- PROPOSED TREES
- PROPOSED HEDGE
- REFER TO LANDSCAPE AND VISUAL IMPACT ASSESSMENT REPORT FOR MITIGATION MEASURES FOR THE PUBLIC OPEN SPACE AT LE FANU
- PROPOSED GREEN ROOF
- DEVELOPMENT BOUNDARY
- PROPOSED TEMPORARY COMPOUND
- PROPOSED SUBSTATION COMPOUND

R:\DTP\1596 - DART Expansion\Kilias\Juni6\A - Project\Drawings\2 - Landscape Mitigation\Drawings\DP-04-23-DWG-RO-TTA-2383A-2384E_V01_S.2383B to 2384A_Landscape_Mitigation.dwg

© Irish Rail (2023). This drawing is confidential and the copyright in it is owned by Irish Rail. This drawing must not be altered, copied or otherwise reproduced in whole or in part or used for any purpose without the prior permission of Irish Rail.
 © Ordnance Survey, Ireland and government of Ireland. All O.S. Data used for plans are printed under "Copyright Ordnance Survey Ireland". Survey No. 0200722. OS Address Data or OS L100 Data & Survey No. 20220720. NTA, 100 (OS) Vector Data.
 All elevations are in metres and relate to OS Grid Model (OSBM) Mean Sea Level as defined by existing Height Control. All Co-ordinates are in Irish Transverse Mercator Grid (ITM) as defined by OS active EPSG notation: 29501 (Easting: 11400)

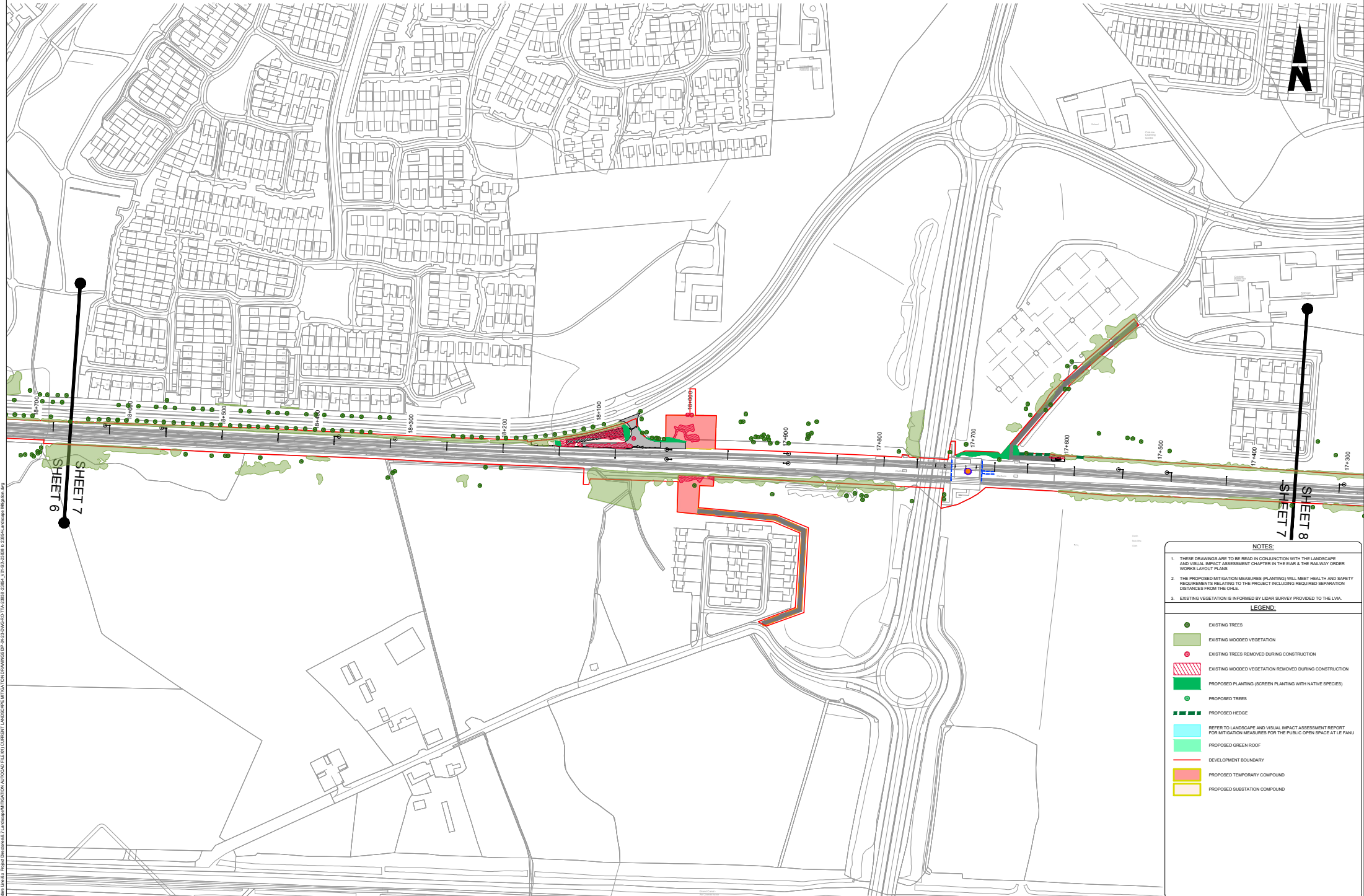


Rev	Date	Dim	CHK'd	App'd	Description
03	11.22				Issue for Review & Comment (PLANNING)
02	11.22				Issue for Review & Comment (PLANNING)
01	10.01.23				PLANNING ISSUE

Date: 11.11.22
 Project Code: 575956
 Issue: RPS
 Scale: 1:1250 (B, AD)
 Drawn: WTS, B.A.
 Checked: DB
 Approved: AGICR

Project Title: DART+ SOUTH WEST
Drawing Title: LANDSCAPE MITIGATION
Sheet: SHEET 6 OF 17
Drawing File Name: DP-04-23-DWG-RO-TTA-2383A
Version: V01
Status: S3

DO NOT SCALE. USE FIGURED DIMENSIONS ONLY.



NOTES:

1. THESE DRAWINGS ARE TO BE READ IN CONJUNCTION WITH THE LANDSCAPE AND VISUAL IMPACT ASSESSMENT CHAPTER IN THE EIA & THE RAILWAY ORDER WORKS LAYOUT PLANS
2. THE PROPOSED MITIGATION MEASURES (PLANTING) WILL MEET HEALTH AND SAFETY REQUIREMENTS RELATING TO THE PROJECT INCLUDING REQUIRED SEPARATION DISTANCES FROM THE GLE.
3. EXISTING VEGETATION IS INFORMED BY LIDAR SURVEY PROVIDED TO THE LVA.

LEGEND:

- EXISTING TREES
- EXISTING WOODED VEGETATION
- EXISTING TREES REMOVED DURING CONSTRUCTION
- EXISTING WOODED VEGETATION REMOVED DURING CONSTRUCTION
- PROPOSED PLANTING (SCREEN PLANTING WITH NATIVE SPECIES)
- PROPOSED TREES
- PROPOSED HEDGE
- REFER TO LANDSCAPE AND VISUAL IMPACT ASSESSMENT REPORT FOR MITIGATION MEASURES FOR THE PUBLIC OPEN SPACE AT LE FANU
- PROPOSED GREEN ROOF
- DEVELOPMENT BOUNDARY
- PROPOSED TEMPORARY COMPOUND
- PROPOSED SUBSTATION COMPOUND

R:\MIDT1596 - DART Expansion\Kilias\Lin6\6 - Project\Development\1 Landscape\MITIGATION\DRAWINGS\DP-04-23-DWG-RO-TTA-2384-2384_V01S-2384-2384_Landscape_Mitigation.dwg

© Irish Rail (2023). This drawing is confidential and the copyright in it is owned by Irish Rail. This drawing must not be altered, copied or otherwise reproduced in whole or in part or used for any purpose without the prior permission of Irish Rail.
 © Ordnance Survey Ireland and government of Ireland. All O.S. Data used for plans are printed under "Copyright Ordnance Survey Ireland". Survey files: OS2022, OS Aerial Data or OS Lidar Data © Survey file: 20220220_Aerial_100 (OS Vector Data).
 All elevations are in metres and relate to OS Grid Model (OSBM2000 Mean Height as defined by existing Mean Sea Level). All Co-ordinates are in Irish Transverse Mercator Grid (ITM) as defined by OS active GPS station Tallaght College (TLUG).



Rev	Date	Dim	CHK'd	App'd	Description
01	11.11.22	DB	ECOC AGCR		PLANNING ISSUE
02	11.11.22	DB	ECOC AGCR		Issue for Review & Comment (PLANNING)

Client: **Irish Rail** / **Irish Rail**

Engineering Designer: **ATKINS** (Member of the Atkins Group)

Drawn by: **rps**

Checked by: **ECOC**

Approved by: **AGCR**

Date: 11.11.22

Scale: 1:1250 (B, A)

Project Code: S1596

Issue: rps

DBS Code: ECOC

Project Title: **DART+ SOUTH WEST**

Drawing Title: **LANDSCAPE MITIGATION**

SHEET 7 OF 17

Drawing File Name: DP-04-23-DWG-RO-TTA-2384

Version: V01

Status: S3

DO NOT SCALE USE FIGURED DIMENSIONS ONLY



NOTES:

1. THESE DRAWINGS ARE TO BE READ IN CONJUNCTION WITH THE LANDSCAPE AND VISUAL IMPACT ASSESSMENT CHAPTER IN THE EIA & THE RAILWAY ORDER WORKS LAYOUT PLANS
2. THE PROPOSED MITIGATION MEASURES (PLANTING) WILL MEET HEALTH AND SAFETY REQUIREMENTS RELATING TO THE PROJECT INCLUDING REQUIRED SEPARATION DISTANCES FROM THE GLE.
3. EXISTING VEGETATION IS INFORMED BY LIDAR SURVEY PROVIDED TO THE LVA.

LEGEND:

- EXISTING TREES
- EXISTING WOODED VEGETATION
- EXISTING TREES REMOVED DURING CONSTRUCTION
- EXISTING WOODED VEGETATION REMOVED DURING CONSTRUCTION
- PROPOSED PLANTING (SCREEN PLANTING WITH NATIVE SPECIES)
- PROPOSED TREES
- PROPOSED HEDGE
- REFER TO LANDSCAPE AND VISUAL IMPACT ASSESSMENT REPORT FOR MITIGATION MEASURES FOR THE PUBLIC OPEN SPACE AT LE FANU
- PROPOSED GREEN ROOF
- DEVELOPMENT BOUNDARY
- PROPOSED TEMPORARY COMPOUND
- PROPOSED SUBSTATION COMPOUND

© Irish Rail (2023). This drawing is confidential and the copyright in it is owned by Irish Rail. This drawing must not be altered, copied or otherwise reproduced in whole or in part or used for any purpose without the prior permission of Irish Rail.
 © Ordnance Survey Ireland and government of Ireland. All O.S. Data used for plans are printed under "Copyright Ordnance Survey Ireland". Survey No. 0200722, OS AerIAL Data or OS (Site Data) & Survey No. 20220201, A66, 100 (OS) Vector Data.
 All elevations are in metres and relate to OS Grid Model (OSBM03) Mean Sea Level as defined by existing Height Control. All Co-ordinates are in Irish Transverse Mercator Grid (ITM) as defined by OS active GPS station Tallaght College (TLG0).



Rev	Date	Dim	CHK'd	App'd	Description
03	11.11.22	DB	EOIC	AGCR	Issue for Review & Comment (PLANNING)
02	11.11.22	DB	EOIC	AGCR	PLANNING ISSUE
01	10.01.23	DB	EOIC	AGCR	

Client: **Irish Rail** / **Irish Rail**

Scale: 1:1250 (B, A0)

Date: 11.11.22

Project Code: 0200722

Issue: RPS

Engineering Designer: **ATKINS**

Drawn by: DB

Checked by: EOIC

Approved by: AGCR

Project Title: **DART+ SOUTH WEST**

Drawing Title: **LANDSCAPE MITIGATION**

SHEET 8 OF 17

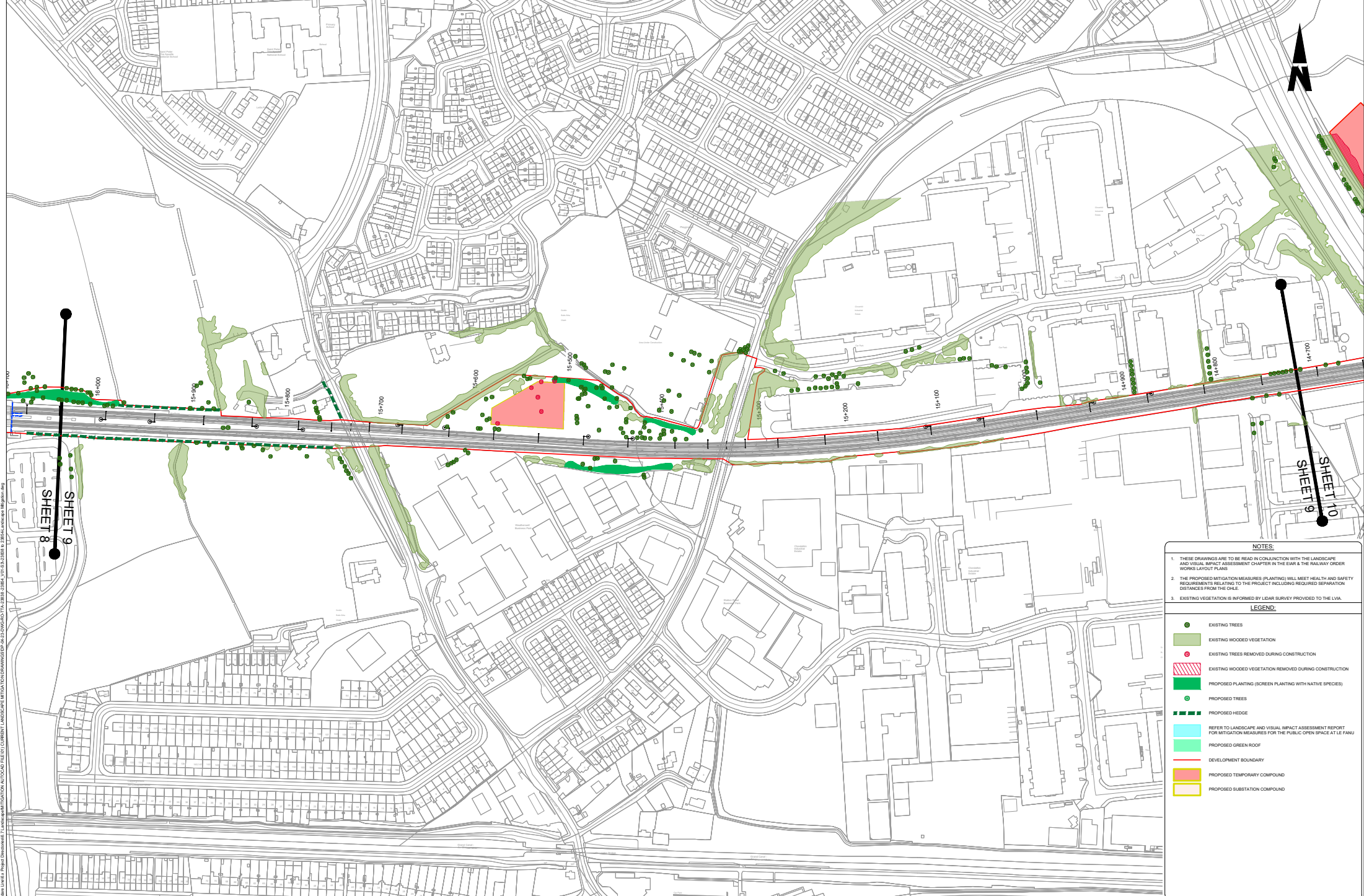
Drawing File Name: DP-04-23-DWG-RO-TTA-23845

Version: V0

Status: S3

DO NOT SCALE USE FIGURED DIMENSIONS ONLY

R:\DPT\056 - DART Expansion\Kelan_Lin\6 - Project Development\7 - Landscape Mitigation\AUTOCAD\FILE\01 - CURRENT LANDSCAPE MITIGATION\DRAWINGS\DP-04-23-DWG-RO-TTA-2384-2384_V01-S-2384-2384-2384-Landscape_Mitigation.dwg



NOTES:

1. THESE DRAWINGS ARE TO BE READ IN CONJUNCTION WITH THE LANDSCAPE AND VISUAL IMPACT ASSESSMENT CHAPTER IN THE EIA & THE RAILWAY ORDER WORKS LAYOUT PLANS
2. THE PROPOSED MITIGATION MEASURES (PLANTING) WILL MEET HEALTH AND SAFETY REQUIREMENTS RELATING TO THE PROJECT INCLUDING REQUIRED SEPARATION DISTANCES FROM THE GLE.
3. EXISTING VEGETATION IS INFORMED BY LIDAR SURVEY PROVIDED TO THE LVA.

LEGEND:

- EXISTING TREES
- EXISTING WOODED VEGETATION
- EXISTING TREES REMOVED DURING CONSTRUCTION
- EXISTING WOODED VEGETATION REMOVED DURING CONSTRUCTION
- PROPOSED PLANTING (SCREEN PLANTING WITH NATIVE SPECIES)
- PROPOSED TREES
- PROPOSED HEDGE
- REFER TO LANDSCAPE AND VISUAL IMPACT ASSESSMENT REPORT FOR MITIGATION MEASURES FOR THE PUBLIC OPEN SPACE AT LE FANU
- PROPOSED GREEN ROOF
- DEVELOPMENT BOUNDARY
- PROPOSED TEMPORARY COMPOUND
- PROPOSED SUBSTATION COMPOUND

© Irish Rail (2023). This drawing is confidential and the copyright in it is owned by Irish Rail. This drawing must not be altered, copied or otherwise reproduced in whole or in part or used for any purpose without the prior permission of Irish Rail.
 © Ordnance Survey Ireland and government of Ireland. All O.S. Data used for plans are printed under "Copyright Ordnance Survey Ireland". Survey data: OS2022, OS Aerial Data or OS LiDAR Data © Survey of Ireland 2022/23. All OS Data used on this drawing.
 All elevations are in metres and relate to OS Grid Model (OSBM) Mean Sea Level as defined by existing Ordnance Survey datum.
 All Co-ordinates are in Irish Transverse Mercator Grid (ITM) as defined by OS active EPSG notation: 29501 (Irish Grid) (ITM).



Rev	Date	Chg	Chk'd	App'd	Description
01	11.11.22	DB	ECG	AGCR	PLANNING ISSUE
02	11.11.22	DB	ECG	AGCR	Issue for Review & Comment (PLANNING)

Client: **Irish Rail**

Project Code: **DP-04-23-DWG-RC-TTA-2384B**

Issue: **ISSUE**

Scale: **1:1250 @ A3**

Date: **11.11.22**

Drawn by: **WYS_BJA**

Checked by: **ECG**

Approved by: **AGCR**

Project Title: **DART+ SOUTH WEST**

Drawing Title: **LANDSCAPE MITIGATION**

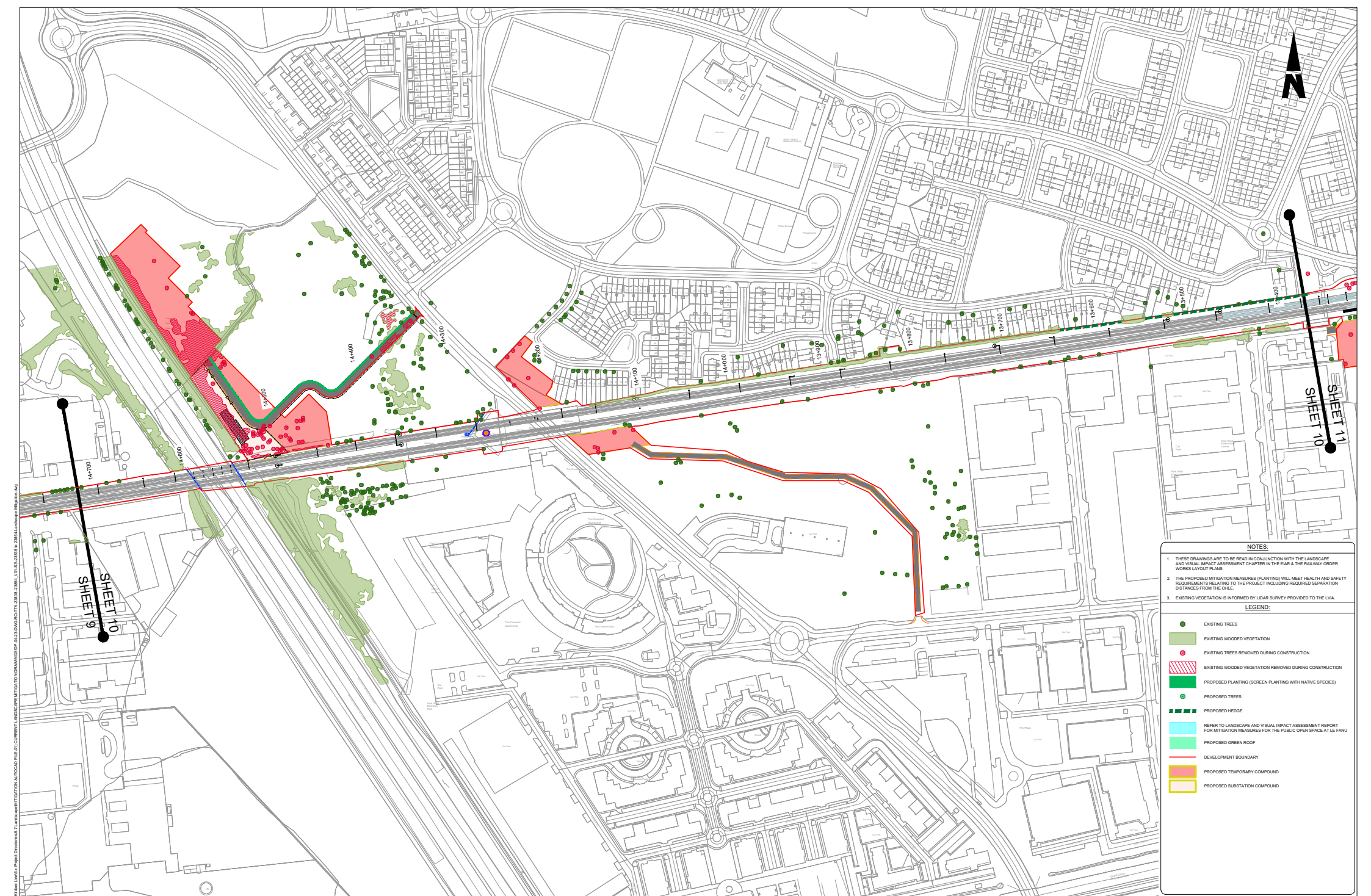
Sheet: **SHEET 9 OF 17**

Drawing File Name: **DP-04-23-DWG-RC-TTA-2384B**

Version: **V01**

Status: **BS3**

DO NOT SCALE USE FIGURED DIMENSIONS ONLY



- NOTES:**
1. THESE DRAWINGS ARE TO BE READ IN CONJUNCTION WITH THE LANDSCAPE AND VISUAL IMPACT ASSESSMENT CHAPTER IN THE EIA & THE RAILWAY ORDER WORKS LAYOUT PLANS
 2. THE PROPOSED MITIGATION MEASURES (PLANTING) WILL MEET HEALTH AND SAFETY REQUIREMENTS RELATING TO THE PROJECT INCLUDING REQUIRED SEPARATION DISTANCES FROM THE GLE.
 3. EXISTING VEGETATION IS INFORMED BY LIDAR SURVEY PROVIDED TO THE LVA.

- LEGEND:**
- EXISTING TREES
 - EXISTING WOODED VEGETATION
 - EXISTING TREES REMOVED DURING CONSTRUCTION
 - EXISTING WOODED VEGETATION REMOVED DURING CONSTRUCTION
 - PROPOSED PLANTING (SCREEN PLANTING WITH NATIVE SPECIES)
 - PROPOSED TREES
 - PROPOSED HEDGE
 - REFER TO LANDSCAPE AND VISUAL IMPACT ASSESSMENT REPORT FOR MITIGATION MEASURES FOR THE PUBLIC OPEN SPACE AT LE FANU
 - PROPOSED GREEN ROOF
 - DEVELOPMENT BOUNDARY
 - PROPOSED TEMPORARY COMPOUND
 - PROPOSED SUBSTATION COMPOUND

© Irish Rail (2023). This drawing is confidential and the copyright in it is owned by Irish Rail. This drawing must not be altered, copied or otherwise reproduced in whole or in part or used for any purpose without the prior permission of Irish Rail. © Ordnance Survey Ireland and government of Ireland. All O.S. Data used for plans are printed under "Copyright Ordnance Survey Ireland". Survey No. 020072, O.S. Airphoto Data or O.S. Lidar Data © Survey No. 2022020, Aerial, 100 (OS Vector Data). All elevations are in metres and relate to OSG Co-Ord Model (OSBM2000 Mean Sea Level as defined by existing Flood Control). All Co-ordinates are in Irish Transverse Mercator Grid (ITM) as defined by O.S. active EPSG notation: 29501 (Easting: 111,000)



Rev	Date	Chg	Chk'd	App'd	Description
13	11.22	DB	EIOC	AGCR	PLANNING ISSUE
12	11.22	DB	EIOC	AGCR	Issue for Review & Comment (PLANNING)

Client: **Irish Rail** / **Irish Rail**

Scale: 1:1250 (B, A)

Date: 11.11.22

Issue: NYS_BA

Drawn: DB

Checked: EIOC

Approved: AGCR

Project Code: 895

DMS Code: AGCR

Project Title: **DART+ SOUTH WEST**

Drawing Title: **LANDSCAPE MITIGATION**

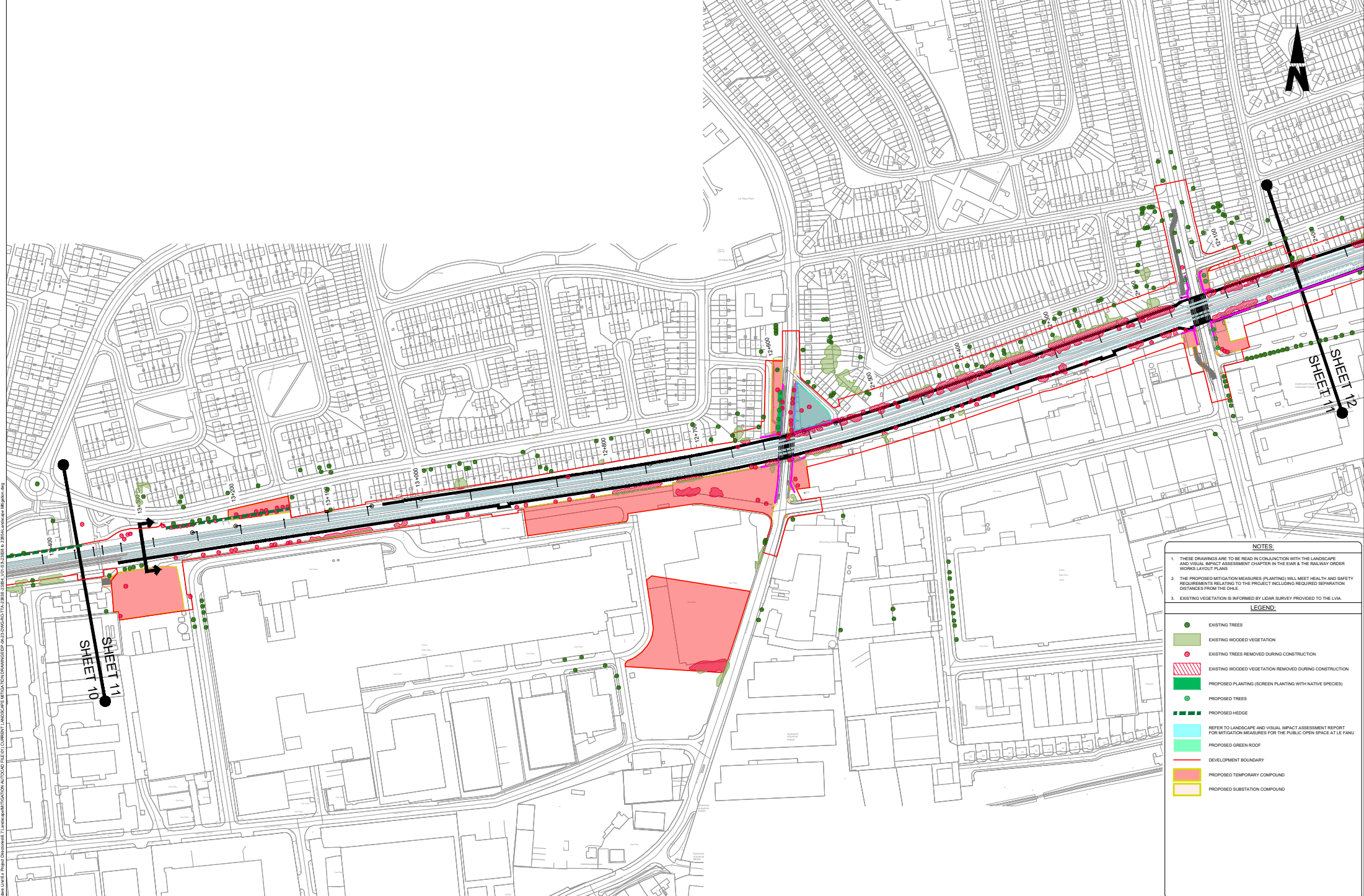
Sheet: **SHEET 10 OF 17**

Drawing File Name: **DP-04-23-DWG-RO-TTA-23848**

Version: **V0**

Status: **S3**

DO NOT SCALE USE FIGURED DIMENSIONS ONLY



SHEET 10
SHEET 11
SHEET 12

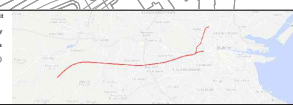
NOTES:

1. THESE DRAWINGS ARE TO BE READ IN CONJUNCTION WITH THE LANDSCAPE AND VISUAL IMPACT ASSESSMENT CHAPTER IN THE EIA & THE RAILWAY ORDER WORKS LAYOUT PLANS
2. THE PROPOSED MITIGATION MEASURES (PLANTING) WILL MEET HEALTH AND SAFETY REQUIREMENTS RELATING TO THE PROJECT INCLUDING REQUIRED SEPARATION DISTANCES FROM THE GLE.
3. EXISTING VEGETATION IS INFORMED BY LIDAR SURVEY PROVIDED TO THE LVA.

LEGEND:

- EXISTING TREES
- EXISTING WOODED VEGETATION
- EXISTING TREES REMOVED DURING CONSTRUCTION
- EXISTING WOODED VEGETATION REMOVED DURING CONSTRUCTION
- PROPOSED PLANTING (SCREEN PLANTING WITH NATIVE SPECIES)
- PROPOSED TREES
- PROPOSED HEDGE
- REFER TO LANDSCAPE AND VISUAL IMPACT ASSESSMENT REPORT FOR MITIGATION MEASURES FOR THE PUBLIC OPEN SPACE AT LE FANU
- PROPOSED GREEN ROOF
- DEVELOPMENT BOUNDARY
- PROPOSED TEMPORARY COMPOUND
- PROPOSED SUBSTATION COMPOUND

© Irish Rail (2023). This drawing is confidential and the copyright in it is owned by Irish Rail. This drawing must not be altered, copied or otherwise reproduced in whole or in part or used for any purpose without the prior permission of Irish Rail.
 © Ordnance Survey Ireland and government of Ireland. All O.S. Data used for plans are printed under "Copyright Ordnance Survey Ireland". Survey files: OS2022, OS Aerial Data or OS Lidar Data) & Survey file: 20220220_Aerial_100 (OS Vector Data).
 All elevations are in metres and relate to OS Grid Model (OSBM2000 Mean Height as defined by existing Height Control).
 All Co-ordinates are in Irish Transverse Mercator Grid (ITM) as defined by OS active GPS station T4894 College (T4894).

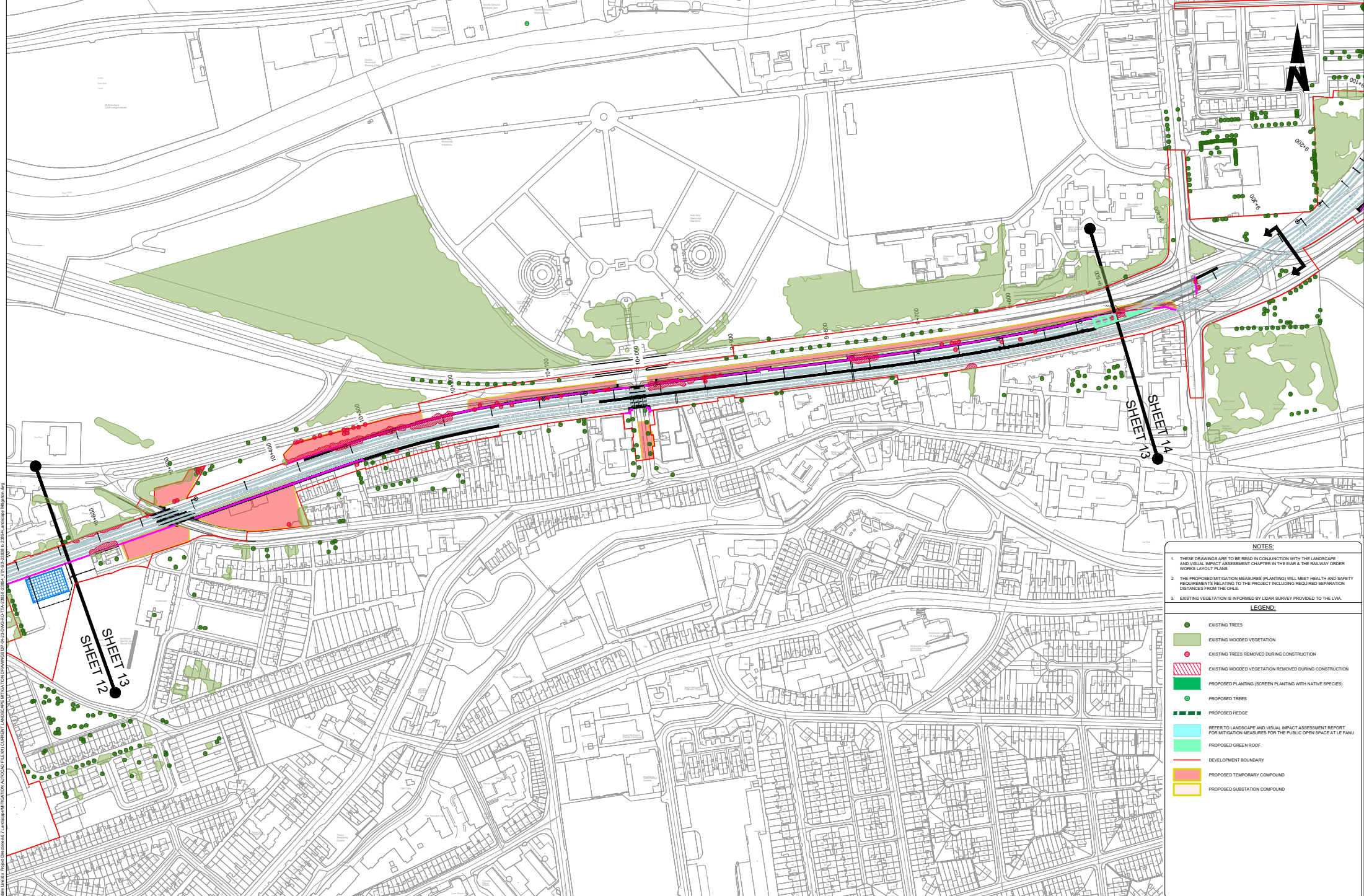


Rev	Date	Chk'd	App'd	Description	
13	11.22	DB	EC/IC	AG/CR	PLANNING ISSUE
12	11.22	DB	EC/IC	AG/CR	Issue for Review & Comment (PLANNING)

										Project Title DART+ SOUTH WEST	
Date 11.11.22		Scale 1:1250 (A)		Drawn DB		Checked EC/IC		Approved AG/CR		Drawing Title LANDSCAPE MITIGATION	
Project Code S19996		Issue SPCS		DMS Code DB		Version V0		Status S3		Drawing File Name DP-04-23-DWG-RO-TTA-23848	

DO NOT SCALE USE FIGURED DIMENSIONS ONLY

R:\MIDT199 - DART Expansion/Kilias Line/6 - Project Development/7 - Landscape Mitigation/AUTOCAD FILE/01 - CURRENT LANDSCAPE MITIGATION DRAWINGS/DP-04-23-DWG-RO-TTA-23848_V01_S-23848_1 - 23848_Landscape_Mitigation.dwg



NOTES:

1. THESE DRAWINGS ARE TO BE READ IN CONJUNCTION WITH THE LANDSCAPE AND VISUAL IMPACT ASSESSMENT CHAPTER IN THE EIA & THE RAILWAY ORDER WORKS LAYOUT PLANS.
2. THE PROPOSED MITIGATION MEASURES (PLANTING) WILL MEET HEALTH AND SAFETY REQUIREMENTS RELATING TO THE PROJECT INCLUDING REQUIRED SEPARATION DISTANCES FROM THE GLE.
3. EXISTING VEGETATION IS INFORMED BY LIDAR SURVEY PROVIDED TO THE LVA.

LEGEND:

- EXISTING TREES
- EXISTING WOODED VEGETATION
- EXISTING TREES REMOVED DURING CONSTRUCTION
- EXISTING WOODED VEGETATION REMOVED DURING CONSTRUCTION
- PROPOSED PLANTING (SCREEN PLANTING WITH NATIVE SPECIES)
- PROPOSED TREES
- PROPOSED HEDGE
- REFER TO LANDSCAPE AND VISUAL IMPACT ASSESSMENT REPORT FOR MITIGATION MEASURES FOR THE PUBLIC OPEN SPACE AT LE FANU
- PROPOSED GREEN ROOF
- DEVELOPMENT BOUNDARY
- PROPOSED TEMPORARY COMPOUND
- PROPOSED SUBSTATION COMPOUND

© Irish Rail (2023). This drawing is confidential and the copyright in it is owned by Irish Rail. This drawing must not be altered, copied or otherwise reproduced in whole or in part or used for any purpose without the prior permission of Irish Rail. All O.S. Data used for plans are printed under: "Copyright Ordnance Survey Ireland". Survey Data: OS2022 (OS Vector Data or OS Lite Data) & Survey Data: OS2022 (OS Vector Data or OS Lite Data). All elevations are in metres and relate to OS Grid Model (OSBM2000 Mean Sea Level as defined by existing Project Control). All Co-ordinates are in Irish Transverse Mercator Grid (ITM) as defined by OS active GPS station T4897 Coláiste (T4897).

Rev	Date	By	Checked	App'd	Description
01	11.11.22	DB	ECG	AGCR	PLANNING ISSUE
02	11.11.22	DB	ECG	AGCR	Issue for Review & Comment (PLANNING)

Date: 11.11.22
 Scale: 1:1250 (A3)
 Project Code: NTA_BA
 Issue: 0102
 Drawn: DB
 Checked: ECG
 Approved: AGCR
 Project Name: DART+ SOUTH WEST
 Drawing Title: LANDSCAPE MITIGATION
 SHEET 13 OF 17
 Drawing File Name: DP-04-23-DWG-RO-TTA-23850
 Version: V0
 Status: S3

DO NOT SCALE USE FIGURED DIMENSIONS ONLY

R:\M01596 - DART Expansion Kildare Line\6 - Project Development\7 - Landscape Mitigation Drawings\DP-04-23-DWG-RO-TTA-23850_V01_S-23850_Landscape_Mitigation.dwg



SHEET 15
SHEET 14

SHEET 13
SHEET 14

- NOTES:**
1. THESE DRAWINGS ARE TO BE READ IN CONJUNCTION WITH THE LANDSCAPE AND VISUAL IMPACT ASSESSMENT CHAPTER IN THE EAR & THE RAILWAY ORDER WORKS LAYOUT PLANS
 2. THE PROPOSED MITIGATION MEASURES (PLANTING) WILL MEET HEALTH AND SAFETY REQUIREMENTS RELATING TO THE PROJECT INCLUDING REQUIRED SEPARATION DISTANCES FROM THE GLE.
 3. EXISTING VEGETATION IS INFORMED BY LIDAR SURVEY PROVIDED TO THE LVA.

- LEGEND:**
- EXISTING TREES
 - EXISTING WOODED VEGETATION
 - EXISTING TREES REMOVED DURING CONSTRUCTION
 - EXISTING WOODED VEGETATION REMOVED DURING CONSTRUCTION
 - PROPOSED PLANTING (SCREEN PLANTING WITH NATIVE SPECIES)
 - PROPOSED TREES
 - PROPOSED HEDGE
 - REFER TO LANDSCAPE AND VISUAL IMPACT ASSESSMENT REPORT FOR MITIGATION MEASURES FOR THE PUBLIC OPEN SPACE AT LE FANU
 - PROPOSED GREEN ROOF
 - DEVELOPMENT BOUNDARY
 - PROPOSED TEMPORARY COMPOUND
 - PROPOSED SUBSTATION COMPOUND

© Irish Rail (2023). This drawing is confidential and the copyright is owned by Irish Rail. This drawing must not be altered, copied or otherwise reproduced in whole or in part or used for any purpose without the prior permission of Irish Rail.
 © Ordnance Survey Ireland and government of Ireland. All O.S. Data used for plans are printed under "Copyright Ordnance Survey Ireland". Survey No. 0200702. OS Vector Data or OSi (Lite Data) © Survey No. 2022020. NMA, 100 (OS) Vector Data.
 All elevations are in metres and relate to OSi Grid Model (OSiGMM03) Mean Sea Level as defined by existing Project Control. All Co-ordinates are in Irish Transverse Mercator Grid (ITM) as defined by OSi active GPS station Tallaght College (TLCLG).



Rev	Date	Chg	Chk'd	App'd	Description
01	10.01.23	DB	EOIC	AGCR	PLANNING ISSUE
02	11.11.22	DB	EOIC	AGCR	Issue for Review & Comment (PLANNING)

Client	Iarnród Éireann Irish Rail		Engineering Designer	ATKINS Network Rail (UK) Ltd		Project Title	DART+ SOUTH WEST		
Drawn	11.11.22	Scale	1:1250 (B, A)	Checked	EOIC	Approved	AGCR	Drawing Title	LANDSCAPE MITIGATION
Project Code	579996	Issue	SPC	DBS Code	DB	AGIC		Drawing File Name	DP-04-23-DWG-RO-TTA-23851

Version	Y0	Status	S3
Scale	DO NOT SCALE USE FIGURED DIMENSIONS ONLY		

R:\DTP\596 - DART Expansion Kildare Line\6 - Project Development\7 - Landscape Mitigation Drawings\DP-04-23-DWG-RO-TTA-23851-23851_V01_S-23851 & 23854-Landscape Mitigation.dwg



AUGHRIM STREET

SHEET 16
SHEET 15

NOTE:
Localised Shrub Removal
to facilitate Emergency Exit.

SHEET 15
SHEET 14

NOTES:

- THESE DRAWINGS ARE TO BE READ IN CONJUNCTION WITH THE LANDSCAPE AND VISUAL IMPACT ASSESSMENT CHAPTER IN THE EIA & THE RAILWAY ORDER WORKS LAYOUT PLANS.
- THE PROPOSED MITIGATION MEASURES (PLANTING) WILL MEET HEALTH AND SAFETY REQUIREMENTS RELATING TO THE PROJECT INCLUDING REQUIRED SEPARATION DISTANCES FROM THE GLE.
- EXISTING VEGETATION IS INFORMED BY LIDAR SURVEY PROVIDED TO THE LVA.

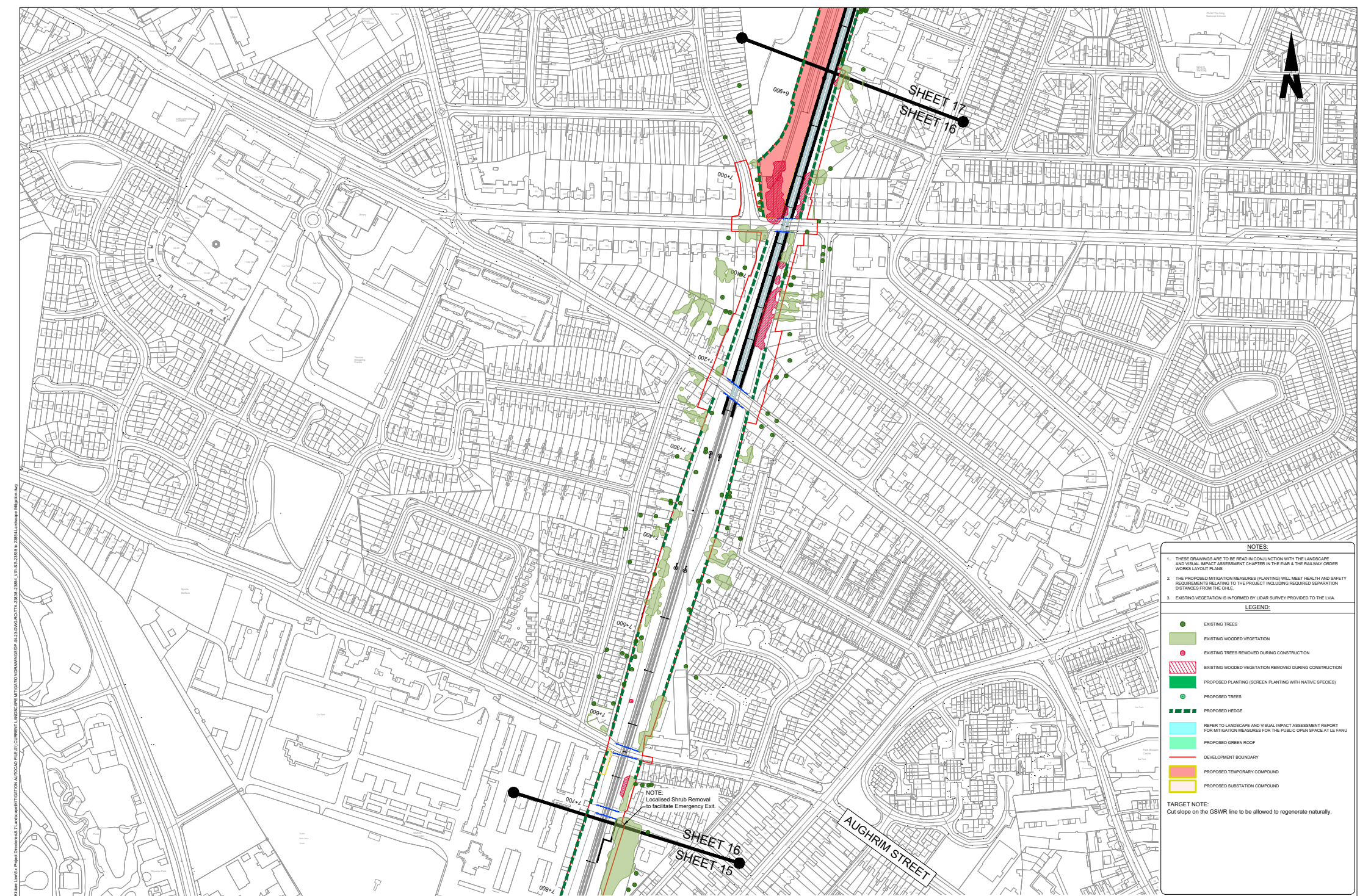
- LEGEND:**
- EXISTING TREES
 - EXISTING WOODED VEGETATION
 - EXISTING TREES REMOVED DURING CONSTRUCTION
 - EXISTING WOODED VEGETATION REMOVED DURING CONSTRUCTION
 - PROPOSED PLANTING (SCREEN PLANTING WITH NATIVE SPECIES)
 - PROPOSED TREES
 - PROPOSED HEDGE
 - REFER TO LANDSCAPE AND VISUAL IMPACT ASSESSMENT REPORT FOR MITIGATION MEASURES FOR THE PUBLIC OPEN SPACE AT LE FANU
 - PROPOSED GREEN ROOF
 - DEVELOPMENT BOUNDARY
 - PROPOSED TEMPORARY COMPOUND
 - PROPOSED SUBSTATION COMPOUND

TARGET NOTE:
Cut slope on the GSWR line to be allowed to regenerate naturally.

© Irish Rail (2023). This drawing is confidential and the copyright in it is owned by Irish Rail. This drawing must not be altered, copied or otherwise reproduced in whole or in part or used for any purpose without the prior permission of Irish Rail.
 © Ordnance Survey Ireland and government of Ireland. All O.S. Data used for plans are printed under "Copyright Ordnance Survey Ireland" Survey No. 0200722. OS Vector Data or OS Lite Data © Survey No. 20220722. All OS (OS) Vector Data.
 All elevations are in metres and relate to OS Grid Model (OSBM00) Mean Sea Level as defined in existing Project Contract. All Co-ordinates are in Irish Transverse Mercator Grid (ITM) as defined by OS active GPS station Flight Coverage (FLC0).

Rev	Date	Chg	Chkd/ Appr	Description
01	11.22			Issue
02	11.22			Issue for Review & Comment (PLANNING)

Client: **Irish Rail**
 Project Title: **DART+ SOUTH WEST**
 Drawing Title: **LANDSCAPE MITIGATION**
 Drawing No: **SHEET 15 OF 17**
 Drawing File Name: **DP-04-23-DWG-RO-TTA-23852**
 Version: **V0**
 Status: **03**



NOTES:

1. THESE DRAWINGS ARE TO BE READ IN CONJUNCTION WITH THE LANDSCAPE AND VISUAL IMPACT ASSESSMENT CHAPTER IN THE EIA & THE RAILWAY ORDER WORKS LAYOUT PLANS
2. THE PROPOSED MITIGATION MEASURES (PLANTING) WILL MEET HEALTH AND SAFETY REQUIREMENTS RELATING TO THE PROJECT INCLUDING REQUIRED SEPARATION DISTANCES FROM THE GSWR.
3. EXISTING VEGETATION IS INFORMED BY LIDAR SURVEY PROVIDED TO THE LVA.

LEGEND:

- EXISTING TREES
- EXISTING WOODED VEGETATION
- EXISTING TREES REMOVED DURING CONSTRUCTION
- ▨ EXISTING WOODED VEGETATION REMOVED DURING CONSTRUCTION
- PROPOSED PLANTING (SCREEN PLANTING WITH NATIVE SPECIES)
- PROPOSED TREES
- PROPOSED HEDGE
- REFER TO LANDSCAPE AND VISUAL IMPACT ASSESSMENT REPORT FOR MITIGATION MEASURES FOR THE PUBLIC OPEN SPACE AT LE FANU
- PROPOSED GREEN ROOF
- DEVELOPMENT BOUNDARY
- PROPOSED TEMPORARY COMPOUND
- PROPOSED SUBSTATION COMPOUND

TARGET NOTE:
Cut slope on the GSWR line to be allowed to regenerate naturally.

NOTE:
Localised Shrub Removal
to facilitate Emergency Exit.

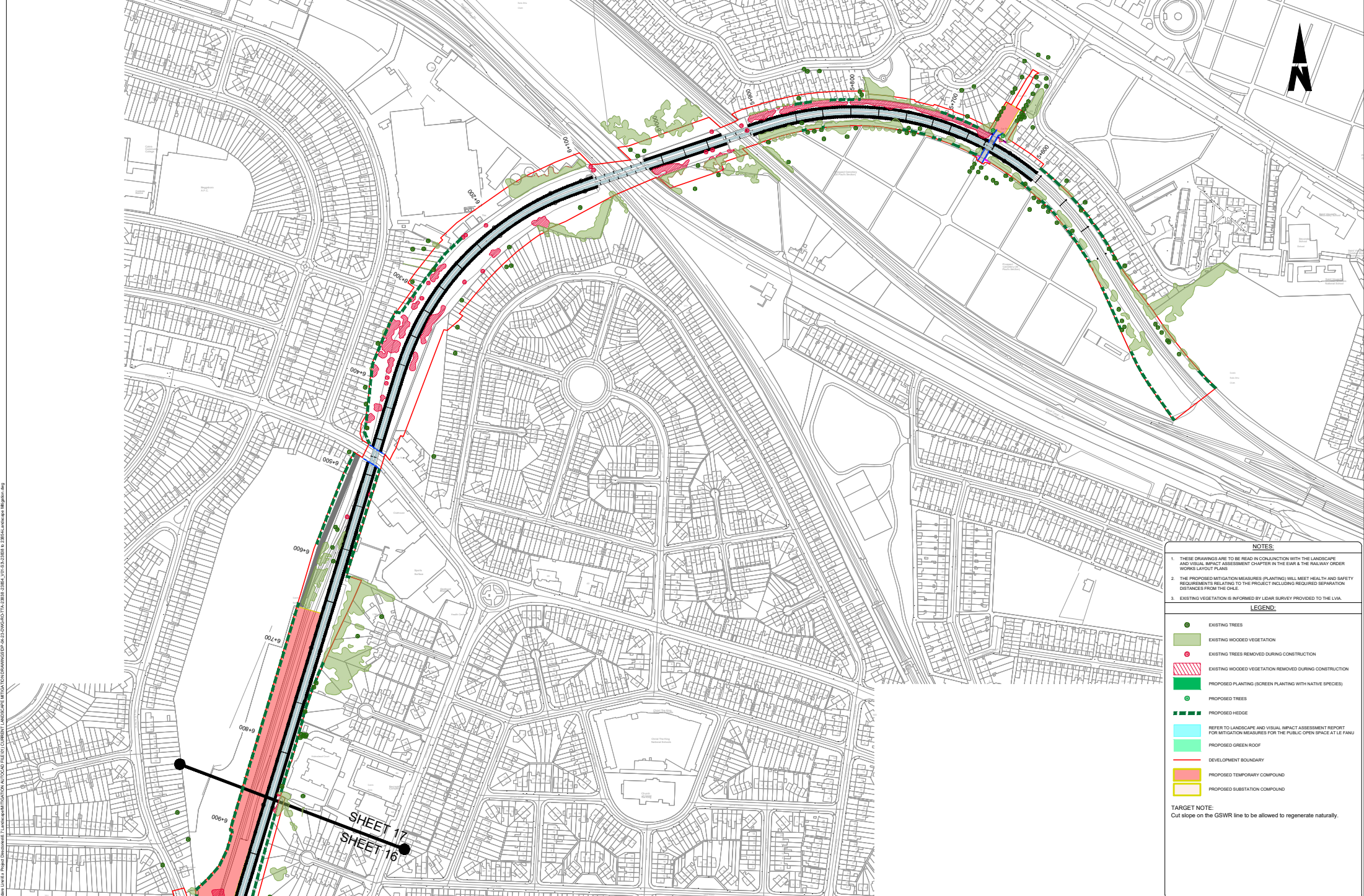
© Irish Rail (2023). This drawing is confidential and the copyright in it is owned by Irish Rail. This drawing must not be altered, copied or otherwise reproduced in whole or in part or used for any purpose without the prior permission of Irish Rail.
 © Ordnance Survey Ireland and government of Ireland. All O.S. Data used for plans are printed under "Copyright Ordnance Survey Ireland". Source: OSN002 (OS National Grid or OS Grid Data) & Survey 10: 2022 (OSN002, OS National Grid or OS Grid Data).
 All elevations are in metres and relate to OS Grid Model (OSBM002). Mean Sea Level is defined by the Ordnance Survey datum.
 All Co-ordinates are in Irish Transverse Mercator Grid (ITM) as defined by OS active EPSG system: 29901 (EPSG:29901).

Rev	Date	Dim	CD/ML	App'd	Description
11	11.22	DB	EC/IC	AG/GR	PLANNING ISSUE
12	11.22	DB	EC/IC	AG/GR	Issue for Review & Comment (PLANNING)

 Irish Rail 11.11.22 Scale: 1:1250 @ A0 Issue: NTA_BA	 ATKINS 11.11.22 Drawn: DB Checked: EC/IC Approved: AG/GR	Project Title: DART+ SOUTH WEST Drawing Title: LANDSCAPE MITIGATION SHEET 16 OF 17 Drawing File Name: DP-04-23-DWG-RO-TTA-23853 Version: 01 Status: 63
--	---	--

DO NOT SCALE USE FIGURED DIMENSIONS ONLY

R:\0423\DP-04-23-DWG-RO-TTA-23853\04-23-DWG-RO-TTA-23853_V01_S-23853.dwg
 Project: DART+ SOUTH WEST
 Drawing: LANDSCAPE MITIGATION
 Sheet: 16 OF 17
 Date: 11.11.22
 Issue: NTA_BA



SHEET 17
SHEET 16

- NOTES:**
1. THESE DRAWINGS ARE TO BE READ IN CONJUNCTION WITH THE LANDSCAPE AND VISUAL IMPACT ASSESSMENT CHAPTER IN THE EAR & THE RAILWAY ORDER WORKS LAYOUT PLANS
 2. THE PROPOSED MITIGATION MEASURES (PLANTING) WILL MEET HEALTH AND SAFETY REQUIREMENTS RELATING TO THE PROJECT INCLUDING REQUIRED SEPARATION DISTANCES FROM THE GLE.
 3. EXISTING VEGETATION IS INFORMED BY LIDAR SURVEY PROVIDED TO THE LVA.

- LEGEND:**
- EXISTING TREES
 - EXISTING WOODED VEGETATION
 - EXISTING TREES REMOVED DURING CONSTRUCTION
 - EXISTING WOODED VEGETATION REMOVED DURING CONSTRUCTION
 - PROPOSED PLANTING (SCREEN PLANTING WITH NATIVE SPECIES)
 - PROPOSED TREES
 - PROPOSED HEDGE
 - REFER TO LANDSCAPE AND VISUAL IMPACT ASSESSMENT REPORT FOR MITIGATION MEASURES FOR THE PUBLIC OPEN SPACE AT LE FANU
 - PROPOSED GREEN ROOF
 - DEVELOPMENT BOUNDARY
 - PROPOSED TEMPORARY COMPOUND
 - PROPOSED SUBSTATION COMPOUND

TARGET NOTE:
Cut slope on the GSWR line to be allowed to regenerate naturally.

R:\MOTD596 - DART Expansion\Kiln Line\6 - Project Development\7 - Landscape Mitigation Drawings\DP-04-23-DWG-RO-TTA-23854-23856_V01-S-23858-b-23854-Landscape_Mitigation.dwg

© Irish Rail (2023). This drawing is confidential and the copyright in it is owned by Irish Rail. This drawing must not be altered, copied or otherwise reproduced in any form or used for any purpose without the prior permission of Irish Rail.
 © Ordnance Survey Ireland and government of Ireland. All O.S. Data used for plans are printed under "Copyright Ordnance Survey Ireland". Survey No. 0200202, OS Address Data or OS Grid Data © Survey No. 2002020, OS Address Data or OS Grid Data
 All elevations are in metres and relate to OS Grid Model OS2003 Mean Sea Level as defined by existing Topographic Control
 All Co-ordinates are in Irish Transverse Mercator Grid (ITM) as defined by OS active EPSG notation 29501 (Easting 15160)

Rev	Date	Dim	CHK'd	App'd	Description
01	10.01.23	DB	EOIC	AGICR	PLANNING ISSUE
02	11.11.22	DB	EOIC	AGICR	Issue for Review & Comment (PLANNING)

Client Irish Rail Iarnród Éireann	Engineering Designer ATKINS Network Rail (UK) Ltd	Project Title DART+ SOUTH WEST
Date 11.11.22	Scale 1:1250 @ A0	Drawing Title LANDSCAPE MITIGATION
Project Code S59566	Issue RPS	SHEET 17 OF 17
Drawn DB	Checked EOIC	Drawing File Name DP-04-23-DWG-RO-TTA-23854
Approved AGICR	Issue Code RPS	Version V01
		Status S3

DO NOT SCALE USE FIGURED DIMENSIONS ONLY